

# NACHI



## NSP 2.0 Hydraulic Power Unit



**Variable Vane Uni-Pump Allows for  
Compact Design**

**Simple Structure and Excellent Reliability  
Ensures Easy Handling Maintenance**



## NSP 2.0 Features

- Cast iron motor provides a durable platform for diverse applications
- Nema premium efficiency motor
- High operating efficiency for lower power consumption and reduced heat generation

## UVN Uni-Pump

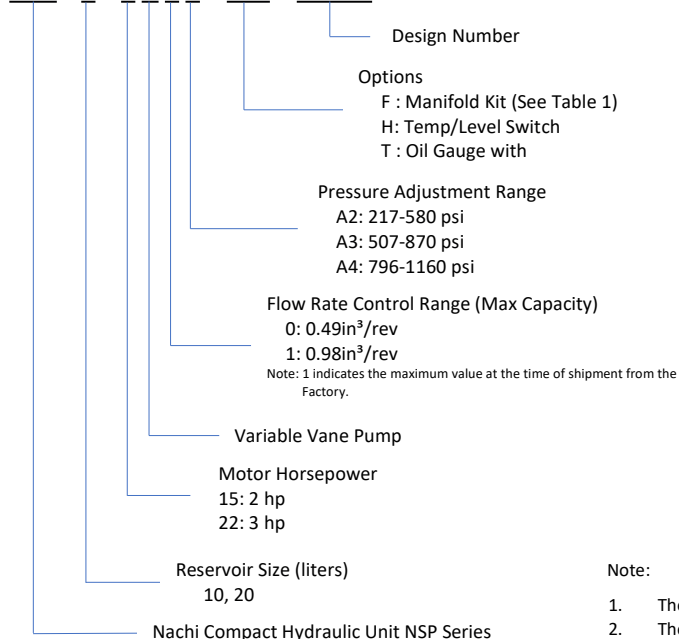
- Reduced heat generation supports high precision applications
- Lightweight, compact, and easy to handle
- Minimizes noise by eliminating the effects of shaft vibration and an off center shaft

## Applications

- Mill
- Injection Molding Machine
- Lathe
- CNC Machine
- Hydraulic Press
- Metal Forming Machinery

## Explanation of Model Number

NSP - \* - \* V \* \* - \*\*\* - 3045A



### Note:

1. There is a restriction to the combination, for example, between pump capacity and motor capacity.
2. The design number may be subject to change without prior notice due to changes in our policy. Please check with your sales representative.

# NSP 2.0 Series

## NSP 2.0 Specifications

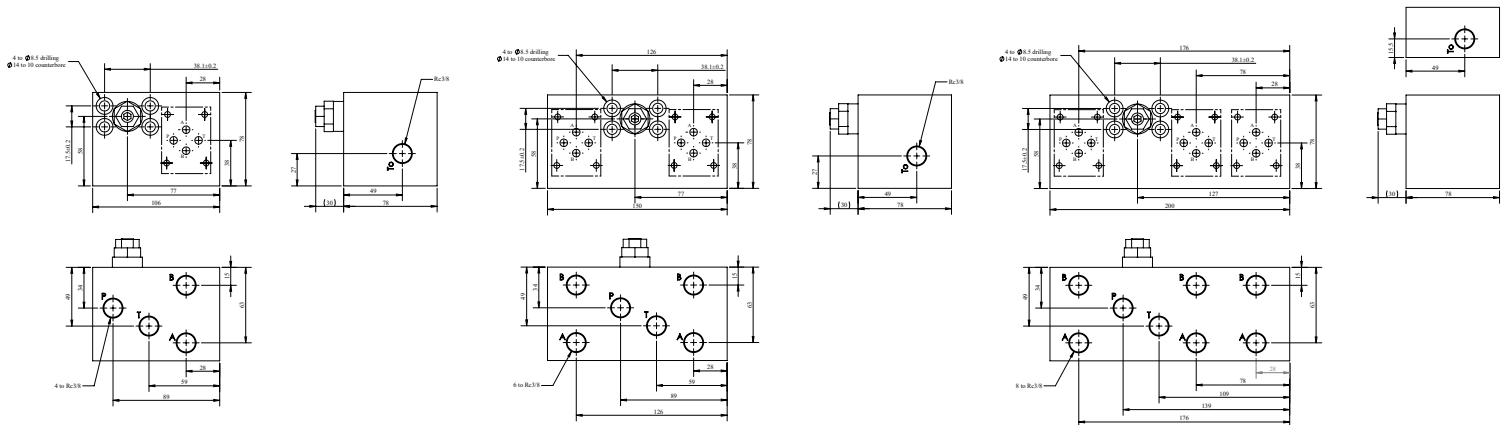
Model No.	Pump Capacity (in <sup>3</sup> /rev)	Flow Rate (gpm)	Motor Capacity (hp)	Maximum Pressure (psi)	Tank Capacity (gal)	Motor Voltage (vac)
NSP-10-15V0A'-***-3045A	0.49	3.8	2	1160	2.5 (10L)	230/460 Dual Voltage
NSP-20-15V0A'-***-3045A					5.25 (20L)	
NSP-10-15V1A'-***-3045A	0.98	7.6	2		2.5 (10L)	
NSP-10-22V1A'-***-3045A			3		5.25 (20L)	
NSP-20-15V1A'-***-3045A			2			
NSP-20-22V1A'-***-3045A			3			

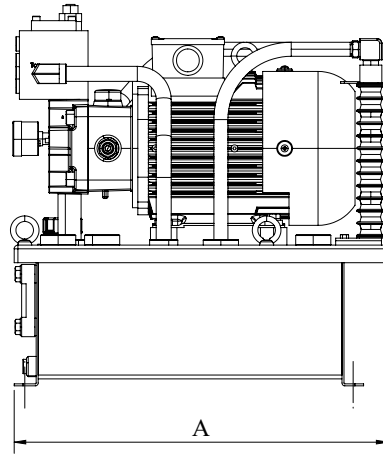
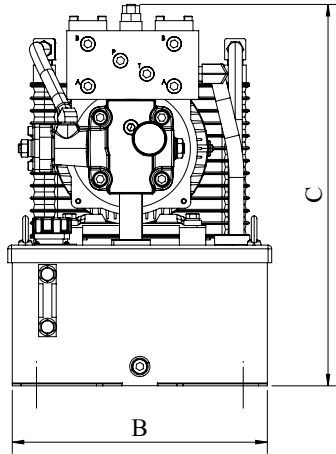
## Optional Manifold Block

- When an optional manifold block is mounted on the pump, make sure the block and valve total is not greater than 33 lbs.

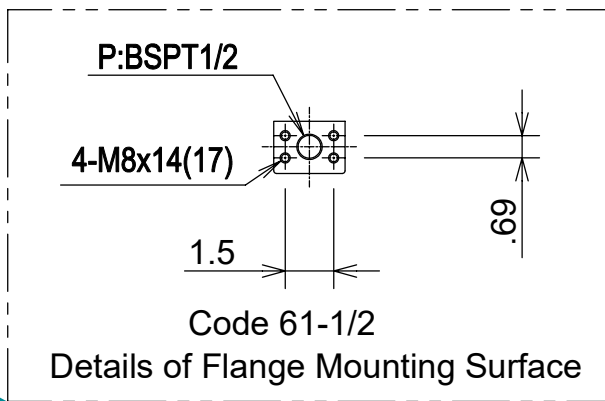
Table 1

Manifold Block Type	F1	F2	F3
Block Weight (lbs)	10	14	19
Allowable Additional Weight (lbs)	23	19	14

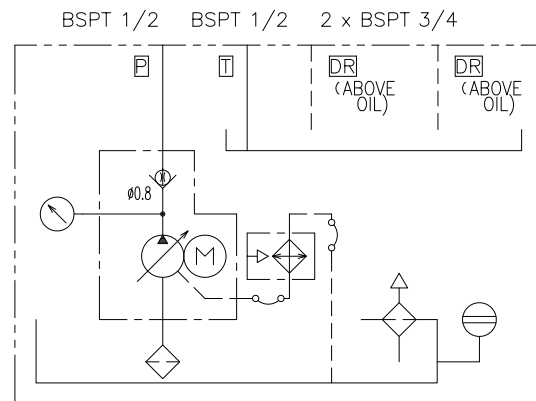




## Flange Mount



## Schematic



**NACHI**  
NACHI AMERICA INC.



[ml-nai.Hydraulics@Nachi.com](mailto:ml-nai.Hydraulics@Nachi.com)  
[www.NachiAmerica.com](http://www.NachiAmerica.com)



Nachi America Inc.  
 715 Pushville Road  
 Greenwood, IN 46143